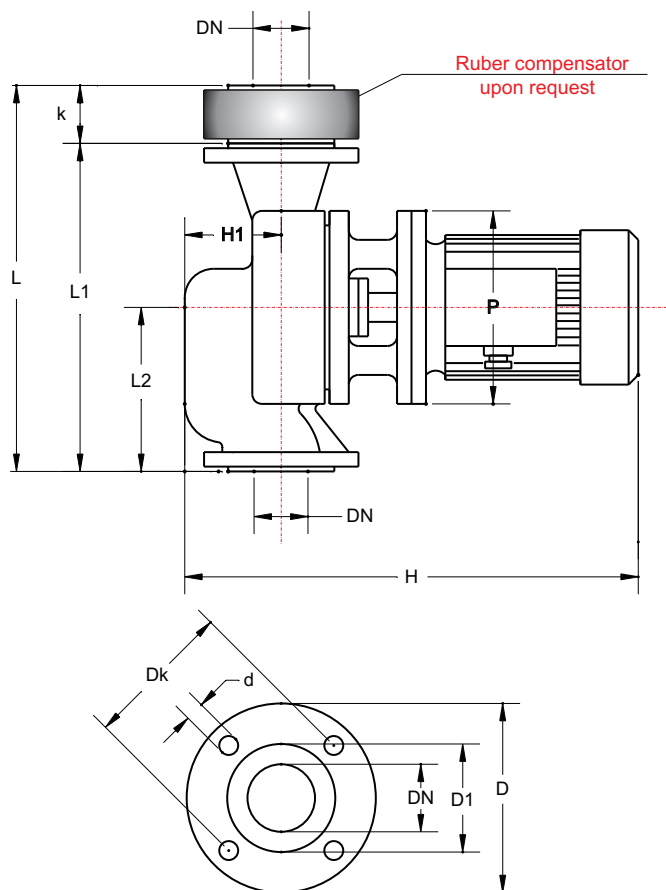


Cirkulator Pumps with flange

Inline pumps



Comprex CP65 - 1450 r.p.m

Temperature Range : -20 to +140 °C

System pressure: NP 6 (bar)

Materials:

For temperatures up to + 90 °C:

Cast iron, stainless steel

Mechanical seal: Carbon / Ceramic.

For temperatures above +90 °C:

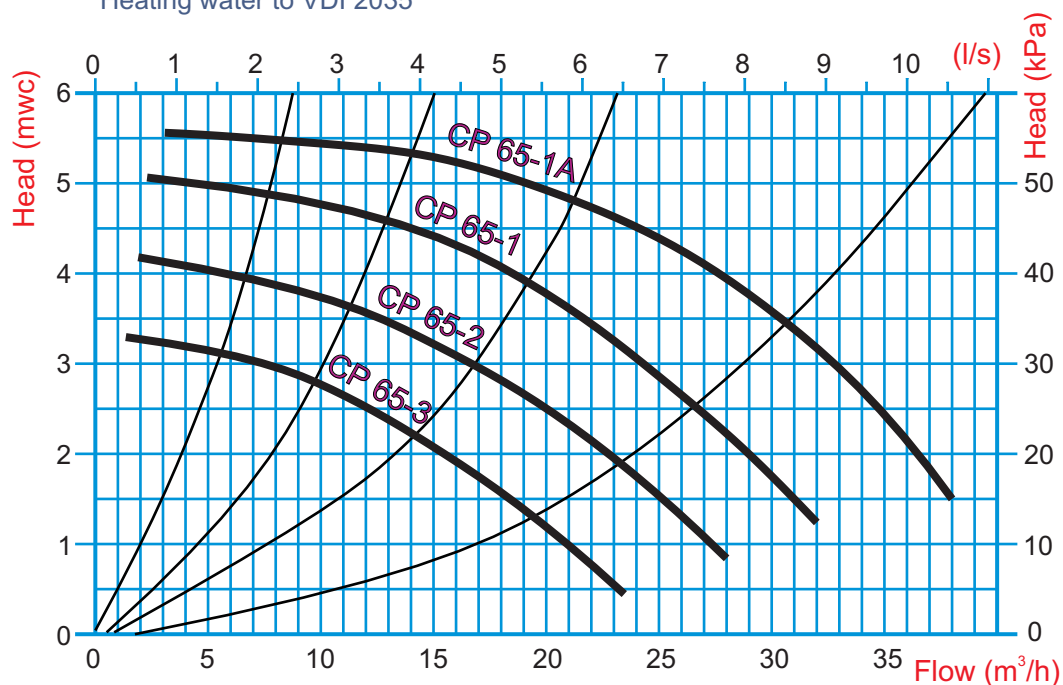
Cast iron, stainless steel and bronze.

Mechanical seal: SiC / SiC / Viton.

Allowed fluids:

Domestic or industrial water without abrasive

Heating water to VDI 2035



Flange NP 6 - DIN 2531					Measurements							
DN	D	D1	Dk	n x d	L	L1	L2	k	DN	H	H1	P
	mm			No.x mm	mm							
65	160	110	130	4 x 14	400	335	167	65	65	432	86	200

Pump Type	Motor Data			
	Type	kW	A	r.p.m
CP65-1A	1ZK 80 B4	0,75	2,1	1400
CP65-1	1ZK 80 B4	0,55	1,7	1380
CP65-2	1ZK 80 B4	0,55	1,7	1380
CP65-3	1ZK 80 B4	0,55	1,7	1380

Type testing of pumps is made at the Institute for Hydraulic Machines faculty of Mechanical Engineering in Belgrade, in accordance with the recommendations of DIN 1944 and ISO 2548th. Report number: 06-01-03/95