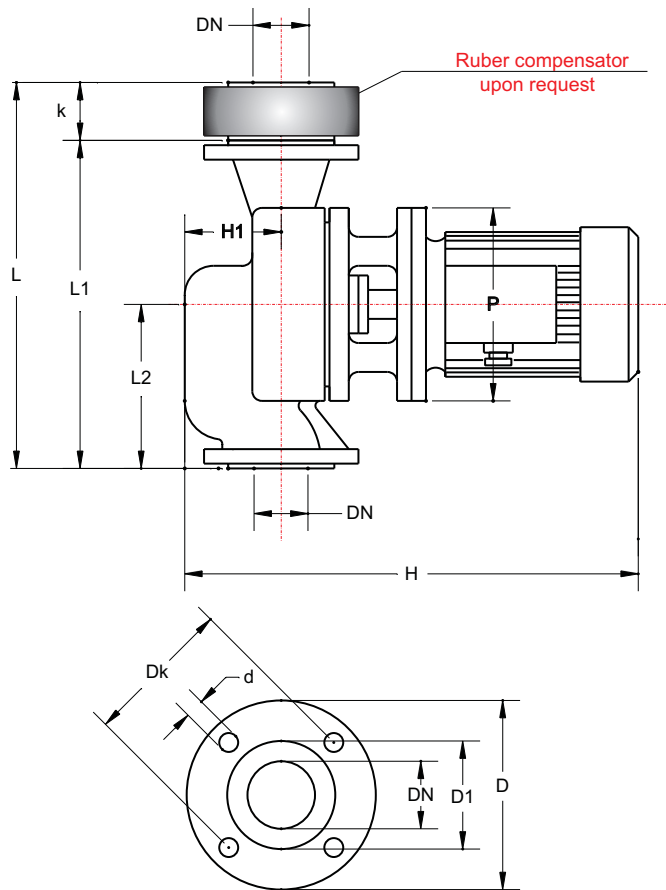


Cirkulator Pumps with flange

Inline pumps



Flange NP 6 - DIN 2531					Measurements							
DN	D	D1	Dk	n x d	L	L1	L2	k	DN	H	H1	P
	mm			No. x mm	mm							
80	190	128	150	4 x 18	410	340	175	70	80	461	95	200

Pump Type	Motor Data			
	Type	kW	A	r.p.m
CP80-1A	1ZK 90 S4	1,1	3,8	1400
CP80-1	1ZK 80 B4	0,75	2,1	1400
CP80-2	1ZK 80 B4	0,75	2,1	1400
CP80-3	1ZK 80 A4	0,55	1,7	1380

Comprex CP80 - 1450 r.p.m

Temperature Range : -20 to +140 °C

System pressure: NP 6 (bar)

Materials:

For temperatures up to + 90 °C:

Cast iron, stainless steel

Mechanical seal: Carbon / Ceramic.

For temperatures above +90 °C:

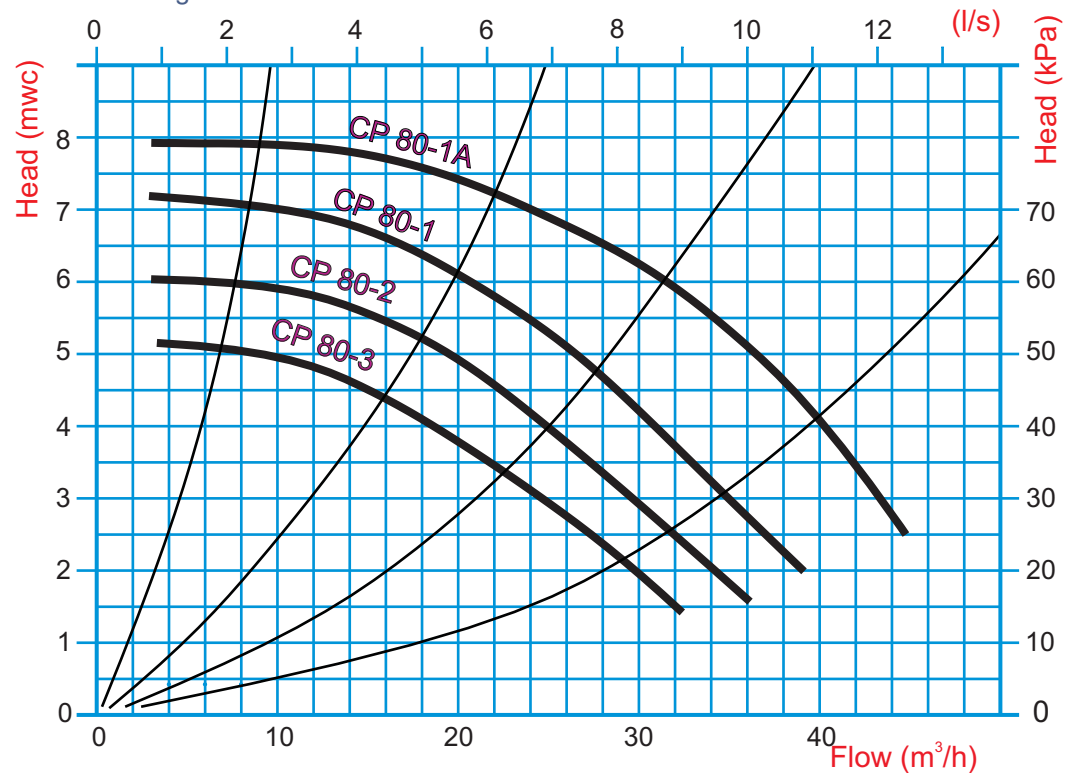
Cast iron, stainless steel and bronze.

Mechanical seal: SiC / SiC / Viton.

Allowed fluids:

Domestic or industrial water without abrasive

Heating water to VDI 2035



Type testing of pumps is made at the Institute for Hydraulic Machines faculty of Mechanical Engineering in Belgrade, in accordance with the recommendations of DIN 1944 and ISO 2548th. Report number: 06-01-03/95