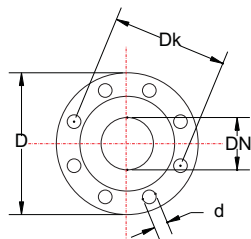
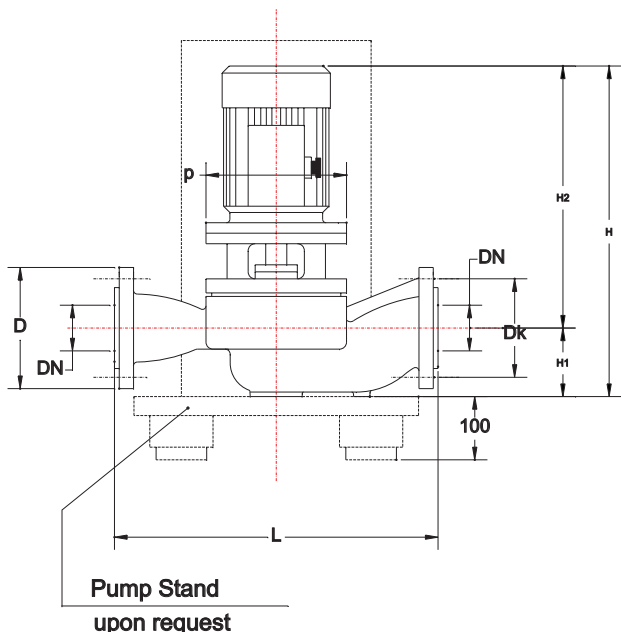


# Cirkulator Pumps with flange

## Inline pumps



| Flange NP 16 - DIN 2531 |     |    |     |         | Measurements |    |    |   |     |     |
|-------------------------|-----|----|-----|---------|--------------|----|----|---|-----|-----|
| DN                      | D   | D1 | Dk  | n x d   | L            | L1 | L2 | k | DN  | H1  |
|                         | mm  |    |     | No.x mm | mm           |    |    |   |     |     |
| 100                     | 220 |    | 180 | 9 x 19  | 520          |    |    |   | 100 | 120 |

| Pump Type | Motor Data |     |     |       | Measurements |      |
|-----------|------------|-----|-----|-------|--------------|------|
|           | Type       | kW  | A   | r.p.m | Hmm          | H2mm |
| PCP 100-1 | 112 M-4    | 4   | 8,7 | 1440  | 593          | 473  |
| PCP 100-2 | 100 Ld-4   | 3   | 6,7 | 1410  | 586          | 466  |
| PCP 100-3 | 100 L-4    | 2,2 | 5,3 | 1400  | 586          | 466  |

## Comprex PCP100 - 1450 r.p.m

Temperature Range : -20 to +140 °C

System pressure: NP 16 (bar)

Materials:

For temperatures up to + 90 °C:

Cast iron, stainless steel

Mechanical seal: Carbon / Ceramic.

For temperatures above +90 °C:

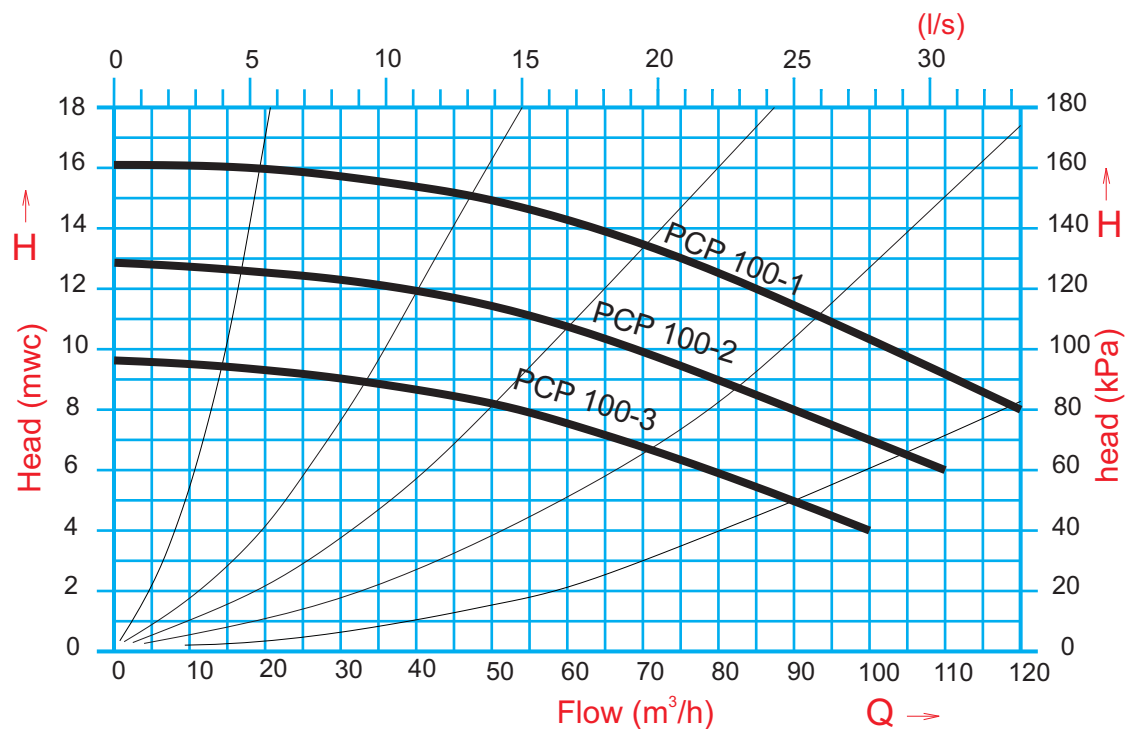
Cast iron, stainless steel and bronze.

Mechanical seal: SiC / SiC / Viton.

Allowed fluids:

Domestic or industrial water without abrasive

Heating water to VDI 2035



Type testing of pumps is made at the Institute for Hydraulic Machines faculty of Mechanical Engineering in Belgrade, in accordance with the recommendations of DIN 1944 and ISO 2548th. Report number: 06-01-03/95